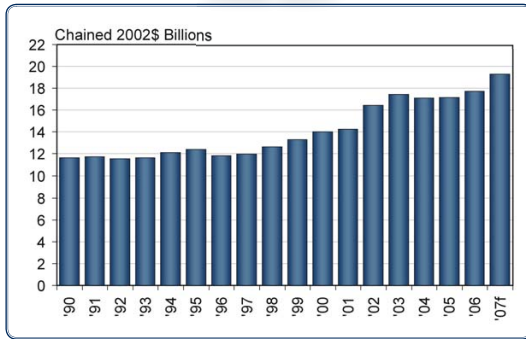
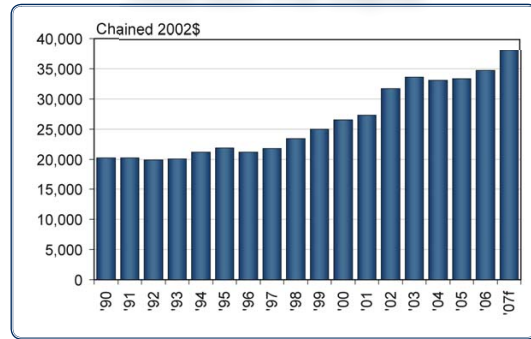


# Selected Indicators

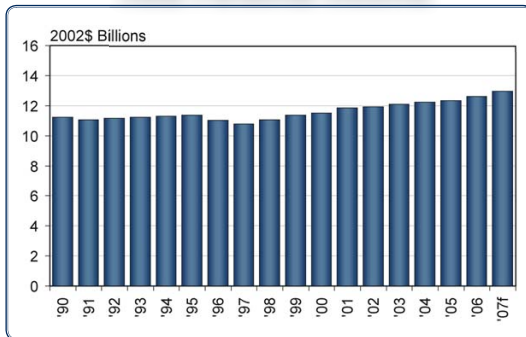
### Real GDP



### Real GDP Per Capita



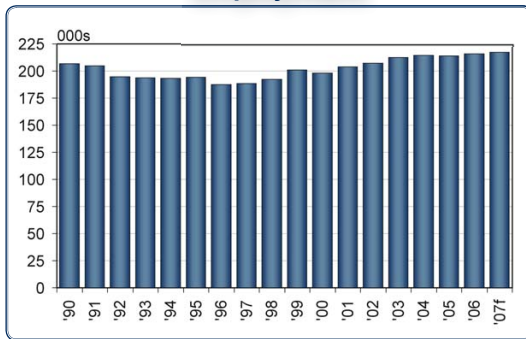
### Real Personal Income



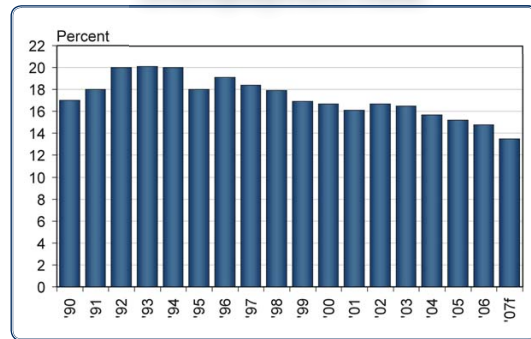
### Real Personal Income Per Capita



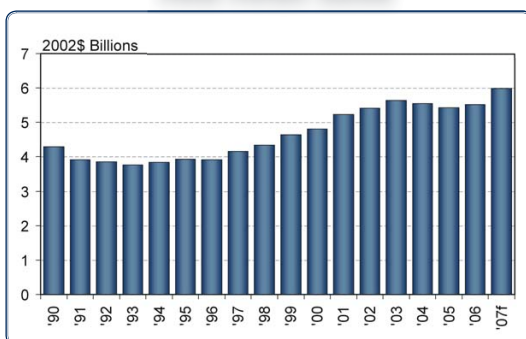
### Employment



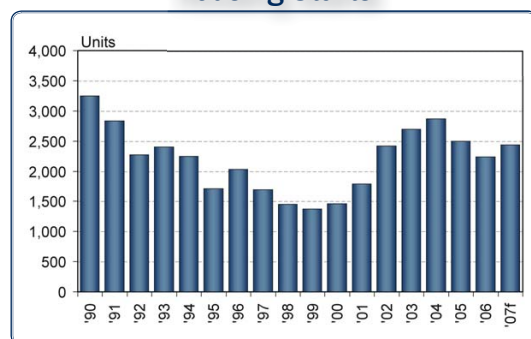
### Unemployment Rate



### Real Retail Sales



### Housing Starts



f: forecast

Note: The stated estimates of personal income do not include the provincial government's special payments to public sector pension plans in 2006 and 2007. Payments of \$1,953 and \$982 million were made to these pension plans in 2006 and 2007 respectively.

Statistics Canada; Canada Mortgage and Housing Corporation; Economic Research and Analysis Division, Department of Finance