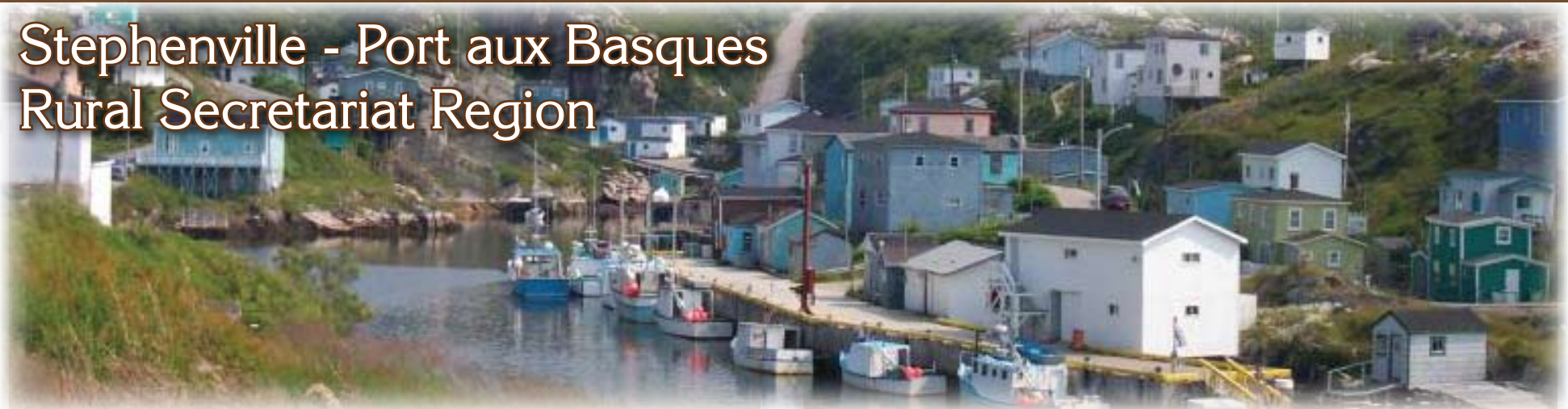


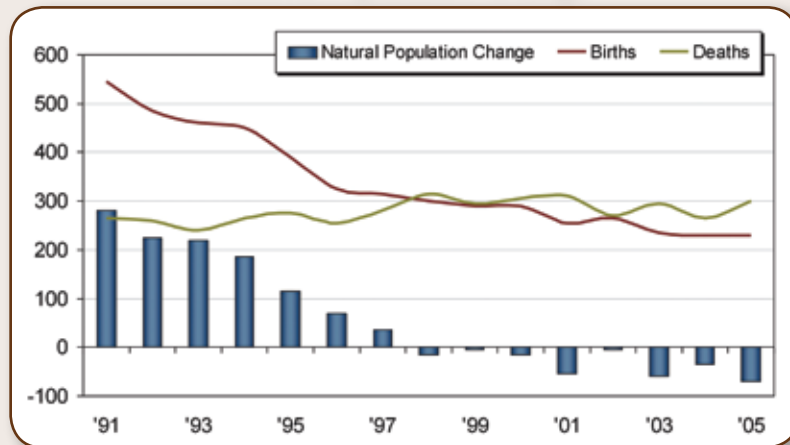
Stephenville - Port aux Basques Rural Secretariat Region



Natural Population Change

The demographics of the Stephenville - Port aux Basques region have changed significantly over the past two decades. Total births declined from 545 in 1991 to 230 in 2005. At the same time, deaths increased, rising from 265 in 1991 to 300 in 2005. Thus, natural population change has declined from an annual increase of 280 in 1991 to a decrease of 70 in 2005.

Natural Population Change



Economics and Statistics Branch, Department of Finance

Out-Migration

Net-migration has usually been negative in the Stephenville - Port aux Basques region. In 1991, annual net out-migration was roughly 670 persons. Net out-migration peaked at around 1,130 in 1998 exacerbated by the collapse of the fishery and changes to the EI program along with other factors. Out-migration slowed over the next few years hitting a low of around 360 in 2003, however, it increased again in recent years reaching approximately 470 in 2005. Recent challenges

Total Net-Migration



Economics and Statistics Branch, Department of Finance

Stephenville - Port aux Basques



in the fishery and forestry industries, and the increased number of attractive high paying jobs in other provinces, particularly Alberta, have provided strong incentives for people to migrate.

Population Today

As a result of the combination of falling natural population change and high levels of net out-migration—particularly amongst youth—the population of the region has declined from 42,900 in 1986 to around 30,600 in 2007.

Furthermore, the population aged rapidly, with the region's median age increasing from around 31 years in the early 1990s to around 45 years today.

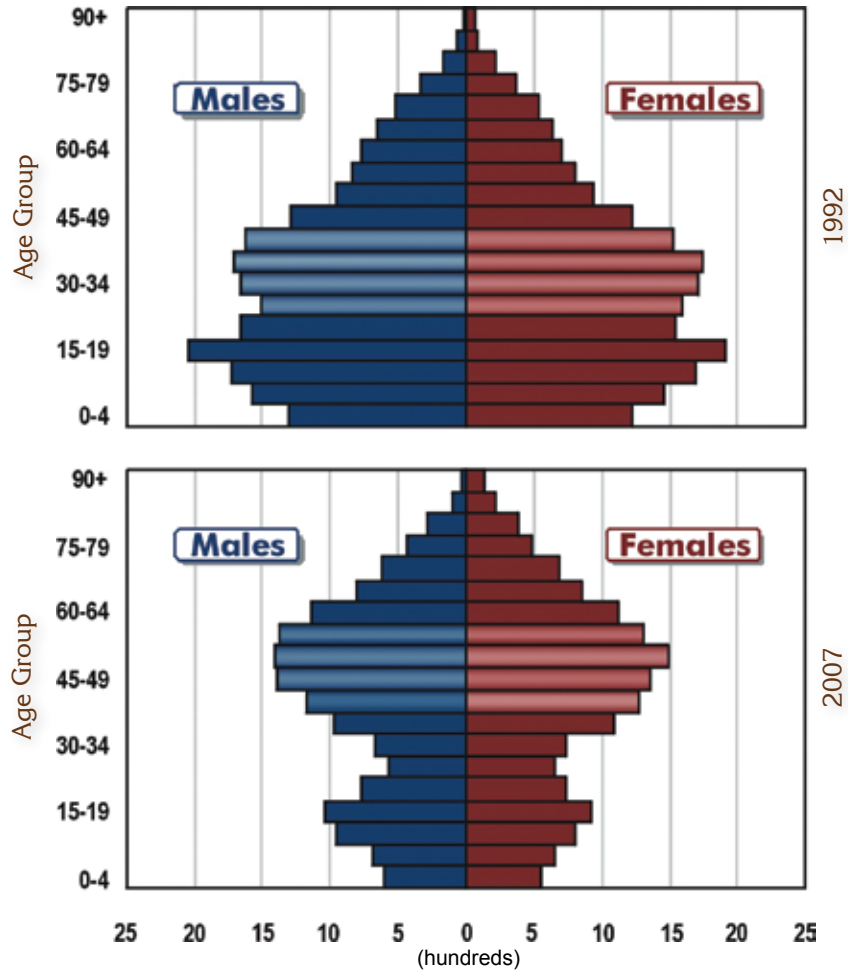
The geographic distribution of the population has changed; generally, the populations of smaller communities in the region have declined at a faster rate than that of larger towns (see table).

Stephenville - Port aux Basques Region
Community Census Counts

Community	1991	2001	2006	% Change 1991-2006
Stephenville	7,621	7,109	6,588	-13.6%
Channel-Port aux Basques	5,644	4,637	4,319	-23.5%
Burgeo	2,400	1,782	1,607	-33.0%
St. George's	1,678	1,354	1,246	-25.7%
Ramea	1,224	754	618	-49.5%
Kippens	1,767	1,802	1,739	-1.6%
Other	19,571	15,562	14,838	-24.2%

Statistics Canada Census Counts

Population Pyramids Stephenville - Port aux Basques

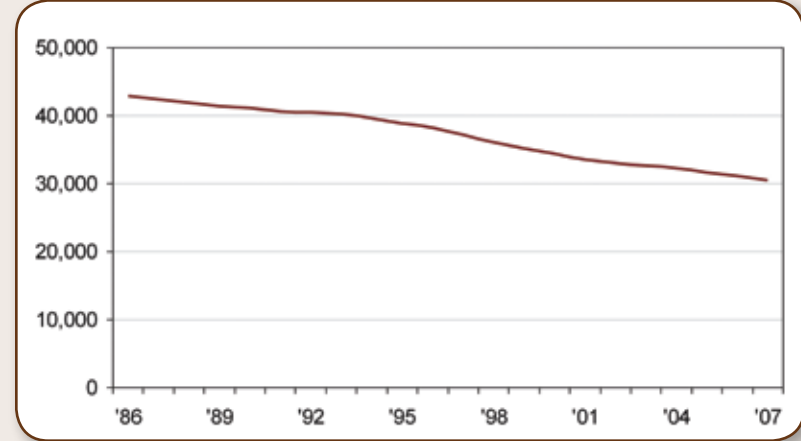


Economics and Statistics Branch, Department of Finance

Interpreting Population Pyramids

Population pyramids show the make-up of the population in terms of the number of males and females grouped by age. Pyramids that are wide at the bottom and small at the top reflect a younger population while those smaller at the bottom and larger at the top reflect an older population. The lighter bars above represent the “baby boomers” (i.e., those born between 1947 and 1966).

Total Population



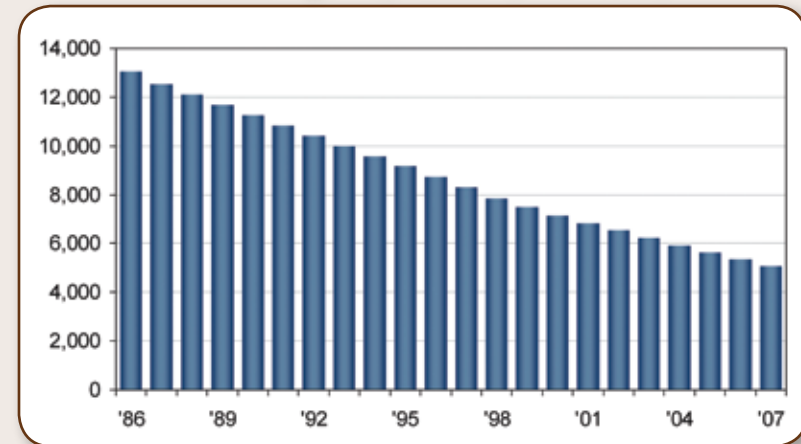
Economics and Statistics Branch, Department of Finance

Changes in Selected Demographic Groups

School Age Population

Out-migration and declining births have reduced the size of the region’s 5 to 19 age group from 13,000 in 1986 to 5,100 in 2007.

School Age Population (5-19 Years)

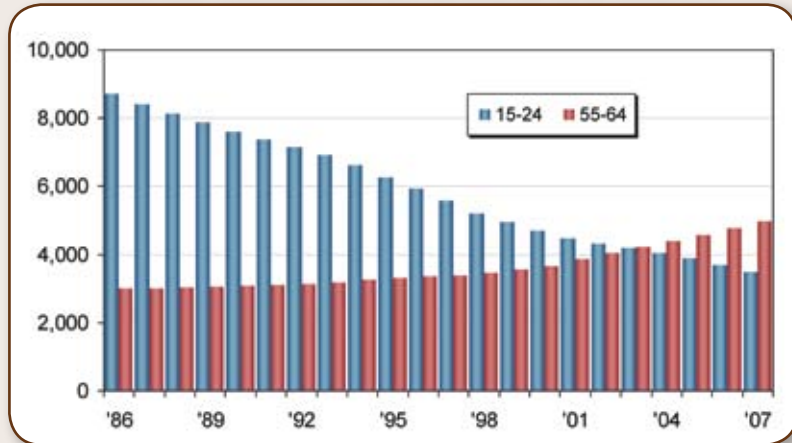


Economics and Statistics Branch, Department of Finance

Labour Market Entrants and Leavers

The number of people preparing to exit the labour market (ages 55-64) now exceeds the number about to enter the labour market (ages 15-24) in this region. In 1986, potential new entrants exceeded potential leavers by 5,700. In 2007, potential labour market leavers exceeded potential new entrants by nearly 1,500.

Potential Labour Market Entrants and Leavers



Economics and Statistics Branch, Department of Finance

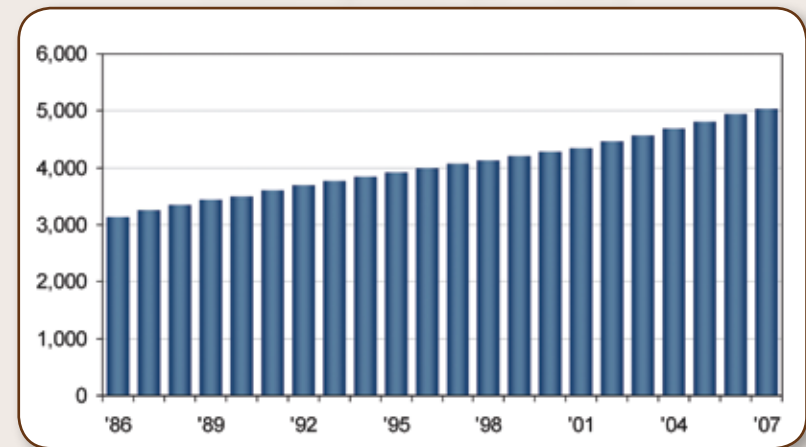
Core Labour Force Population

As a result of aging and out-migration, the core labour force population (ages 15-64) declined from 28,300 in 1986 to 21,300 in 2007. This group is also aging. In 1986, 76.5% of this group were ages 15-44. Today, 50% are between the ages of 15 and 44 and 50% are 45 or older.

Seniors

Despite the drop in total population in this region over the past two decades, aging and rising life expectancy have increased the seniors population from 3,100 in 1986 to around 5,000 in 2007.

Seniors Population (65+ Years)



Economics and Statistics Branch, Department of Finance