

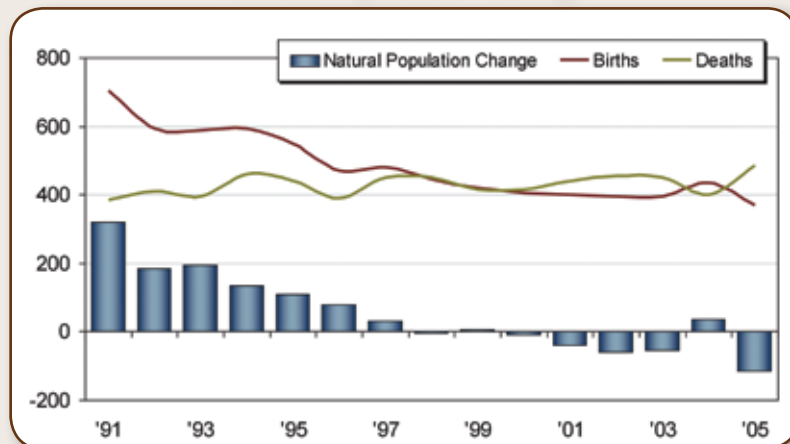
# Gander - New-Wes-Valley Rural Secretariat Region



## Natural Population Change

The demographics of the Gander - New-Wes-Valley region have changed significantly over the past 20 years. Total births declined from 705 in 1991 to 370 in 2005. At the same time, deaths increased, rising from 385 in 1991 to 485 in 2005. Thus, natural population change has declined from an annual increase of 320 in 1991 to a decrease of 115 in 2005.

Natural Population Change



Economics and Statistics Branch, Department of Finance

## Out-Migration

Net-migration has usually been negative in the Gander - New-Wes-Valley region. In 1991, annual net out-migration was roughly 480 persons. Net out-migration peaked at around 1,440 in 1998 exacerbated by the collapse of the fishery and changes to the EI program along with other factors. Out-migration slowed over the next few years hitting a low of around 280 in 2003, however, it increased again in recent years reaching approximately 400 in

Total Net-Migration



Economics and Statistics Branch, Department of Finance

# Gander - New-Wes-Valley



2005. Recent challenges in the fishery and forestry industries, and the increased number of attractive high paying jobs in other provinces, particularly Alberta, have provided strong incentives for people to migrate.

## Population Today

As a result of the combination of falling natural population change and high levels of net out-migration—particularly amongst youth—the population of the region has declined from 59,400 in 1986 to around 46,600 in 2007.

Furthermore, the population aged rapidly with the region’s median age increasing from around 32 years in the early 1990s to about 44 years today.

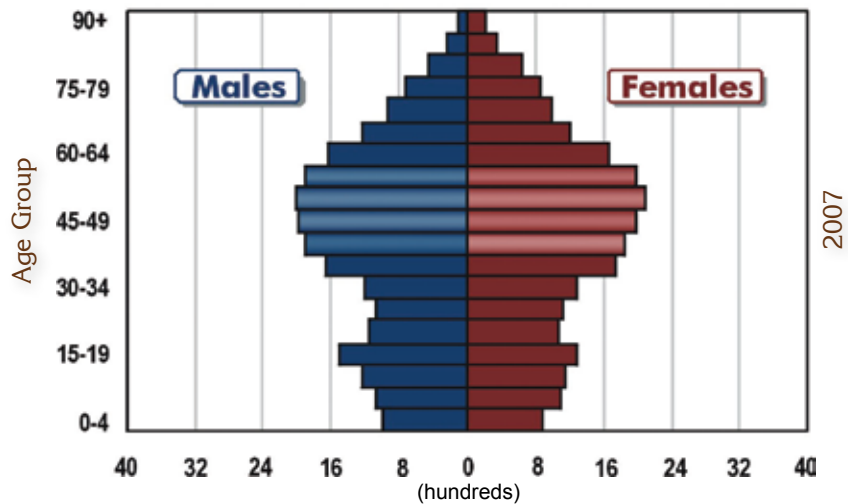
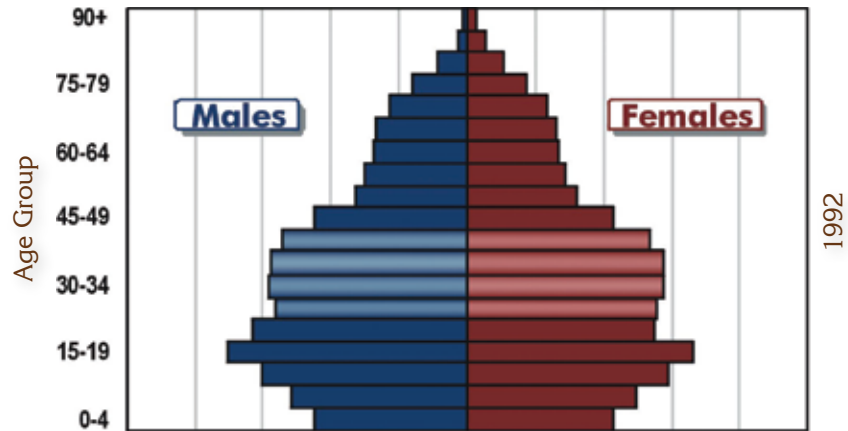
The geographic distribution of the population has changed; generally, the populations of smaller communities in the region have declined at a faster rate than that of larger towns (see table).

Gander - New-Wes-Valley Region  
Community Census Counts

Community	1991	2001	2006	% Change 1991-2006
Gander	10,339	9,651	9,951	-3.8%
Lewisporte	3,848	3,312	3,308	-14.0%
New-Wes-Valley	3,230	2,832	2,485	-23.1%
Glovertown	2,276	2,163	2,062	-9.4%
Twillingate	2,969	2,611	2,448	-17.5%
Fogo	1,030	803	748	-27.4%
Gambo	2,496	2,084	2,072	-17.0%
Glenwood	984	845	762	-22.6%
Eastport	601	509	499	-17.0%
Other	29,247	23,785	22,515	-23.0%

Statistics Canada Census Counts

### Population Pyramids Gender - New-Wes-Valley

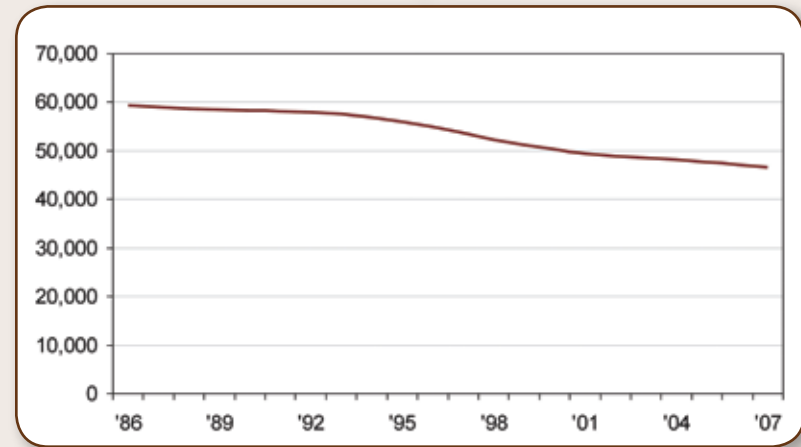


Economics and Statistics Branch, Department of Finance

#### Interpreting Population Pyramids

Population pyramids show the make-up of the population in terms of the number of males and females grouped by age. Pyramids that are wide at the bottom and small at the top reflect a younger population while those smaller at the bottom and larger at the top reflect an older population. The lighter bars above represent the “baby boomers” (i.e., those born between 1947 and 1966).

### Total Population



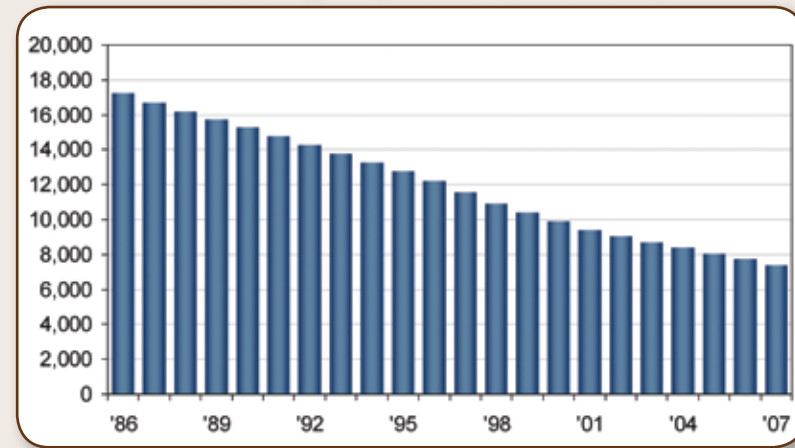
Economics and Statistics Branch, Department of Finance

### Changes in Selected Demographic Groups

#### School Age Population

Out-migration and declining births have reduced the size of this region’s 5 to 19 age group from 17,300 in 1986 to 7,400 in 2007.

#### School Age Population (5-19 Years)

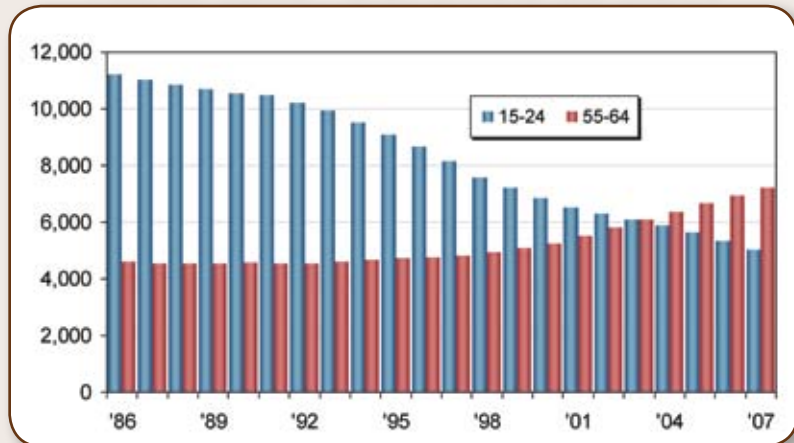


Economics and Statistics Branch, Department of Finance

### Labour Market Entrants and Leavers

The number of people preparing to exit the labour market (ages 55-64) now exceeds the number about to enter the labour market (ages 15-24) in this region. In 1986, potential new entrants exceeded potential leavers by 6,600. In 2007, the number of potential labour market leavers exceeded potential new entrants by 2,200.

Potential Labour Market Entrants and Leavers



Economics and Statistics Branch, Department of Finance

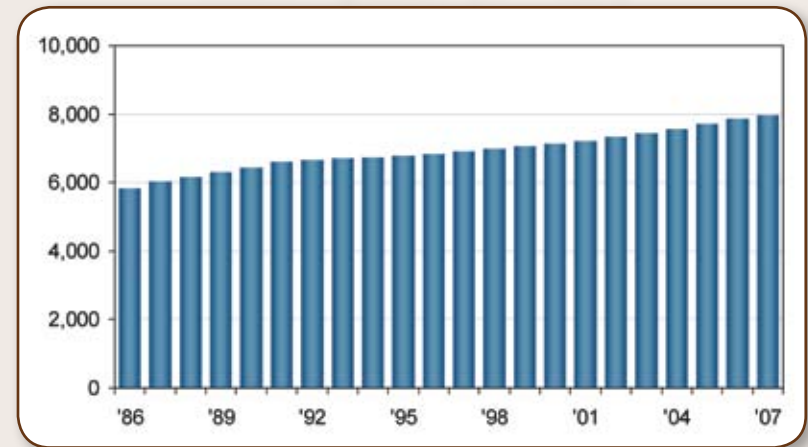
### Core Labour Force Population

As a result of aging and out-migration, the core labour force population (ages 15-64) declined from 38,300 in 1986 to 32,200 in 2007. This group is also aging. In 1986, 74.7% of this group were ages 15-44. Today, 52.5% are between the ages of 15 and 44 and 47.5% are 45 or older.

### Seniors

Despite the drop in total population in this region over the past two decades, aging and rising life expectancy have increased the seniors population from 5,800 in 1986 to almost 8,000 in 2007.

### Seniors Population (65+ Years)



Economics and Statistics Branch, Department of Finance